



**COMPUTER UNIT TITLE REGISTER
UNDER LAND TRANSFER ACT 1952**



Search Copy


R. W. Muir
Registrar-General
of Land

Identifier 378454
Land Registration District Otago
Date Issued 31 July 2008

Prior References
324057

Supplementary Record Sheet
401038

Estate Stratum in Freehold
Legal Description Unit 3 and Accessory Unit 3A Deposited
Plan 394642

Proprietors
Station Properties Limited

The above estates are subject to the reservations, restrictions, encumbrances, liens and interests noted below and on the relevant unit plan and supplementary record sheet

7051741.2 Mortgage to BOS International (Australia) Limited - 2.10.2006 at 9:00 am

7051741.3 Mortgage to Dominion Finance Group Limited - 2.10.2006 at 9:00 am

Identifier

378454



**SUPPLEMENTARY RECORD SHEET
UNDER UNIT TITLES ACT 1972**

Search Copy

Identifier

401038

Land Registration District

Otago

Date Issued

31 July 2008

Plan Number

DP 394642

Prior References

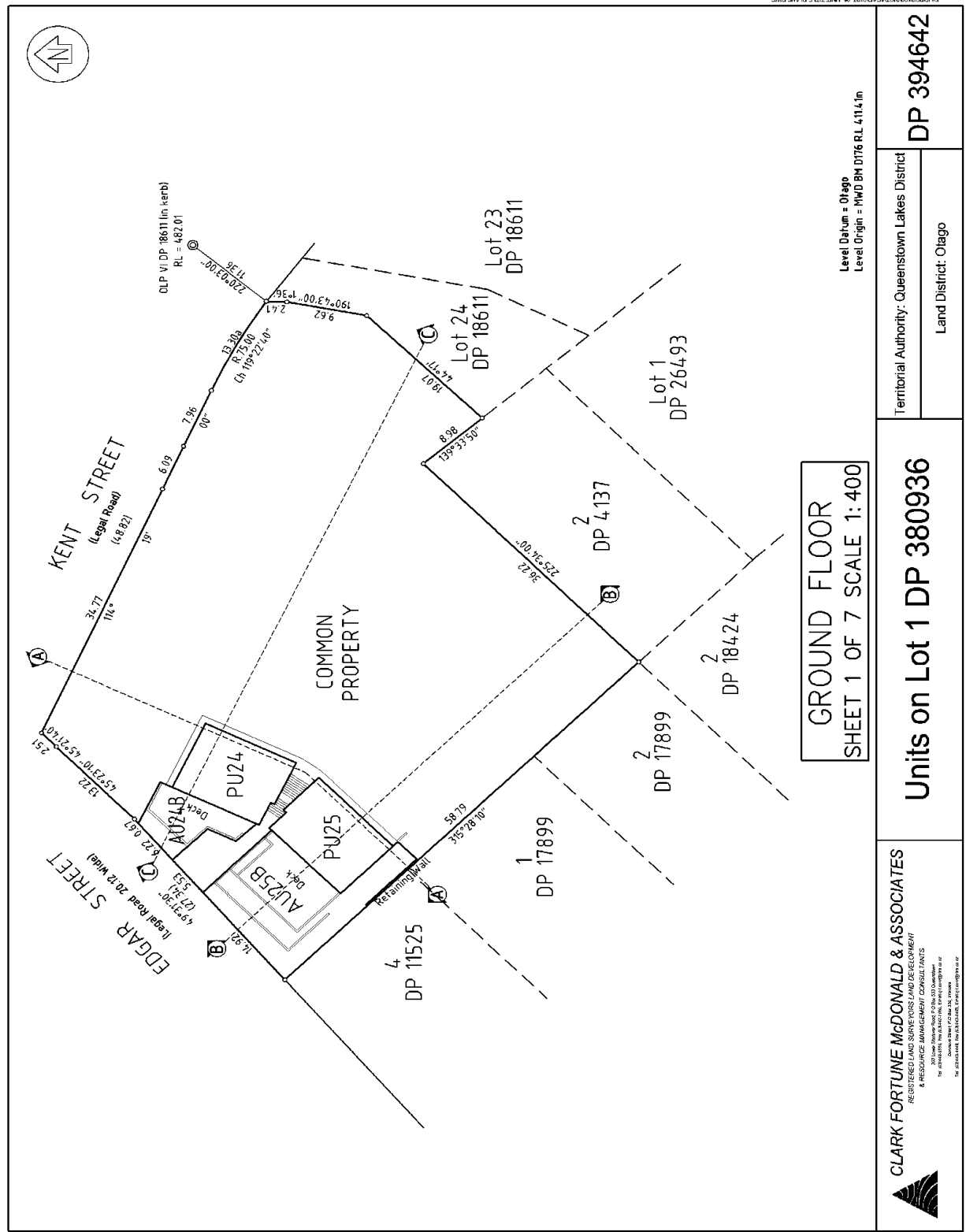
324057

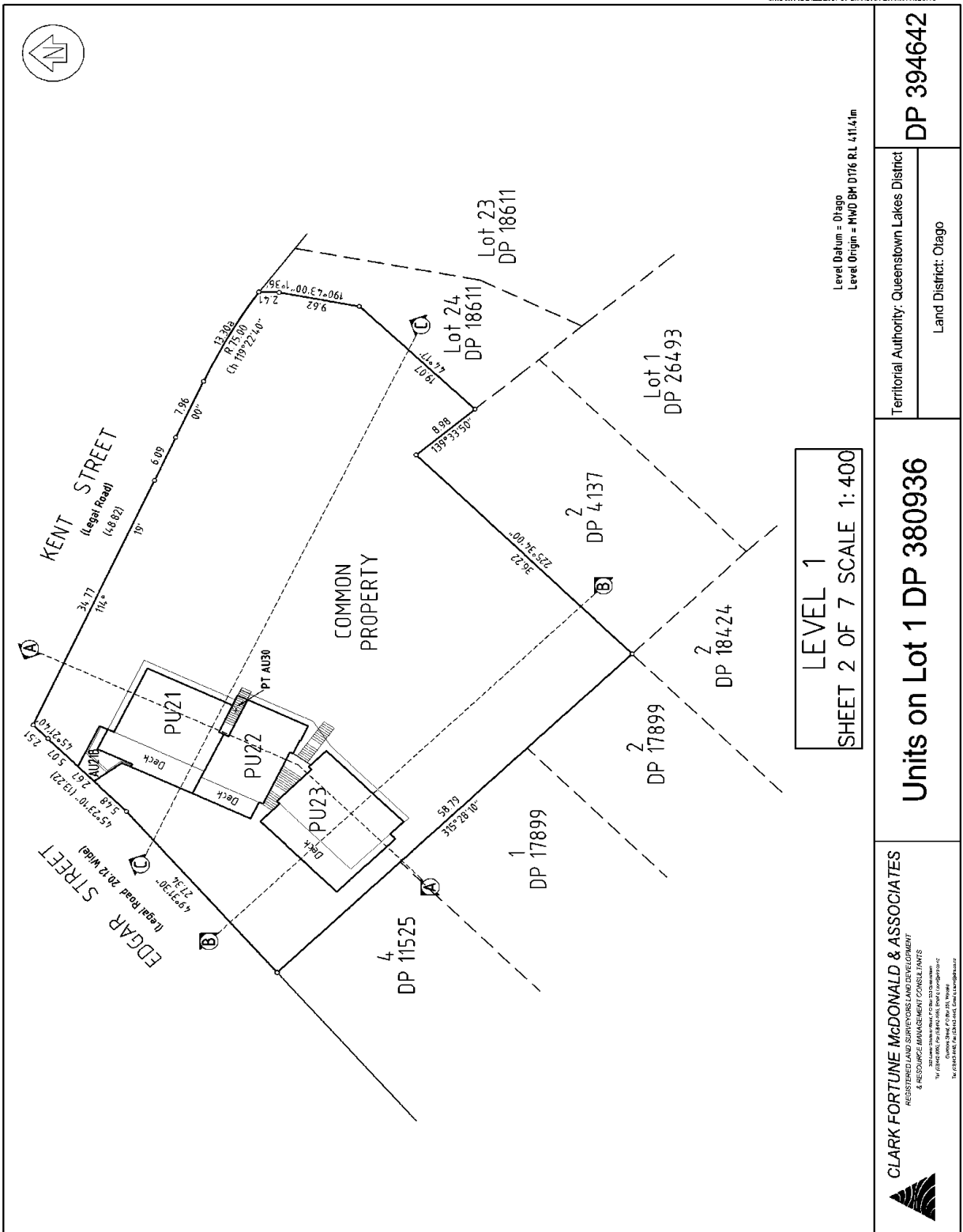
Unit Titles Issued

378452	378453	378454	378455
378456	378457	378458	378459
378460	378461	378462	378463
378464	378465	378466	378467
378468	378469	378470	378471
401030	401031	401032	401033
401034	401035	401036	401037

Interests

7901128.1 Change of rules of the Body Corporate - 6.8.2008 at 3:05 pm





SURCS81009179AC29H2 (C:\MT\TITLE\PLANS.DWG)

Level Datum = Ottago
Level Origin = MWD BM D176 RL 411.41m

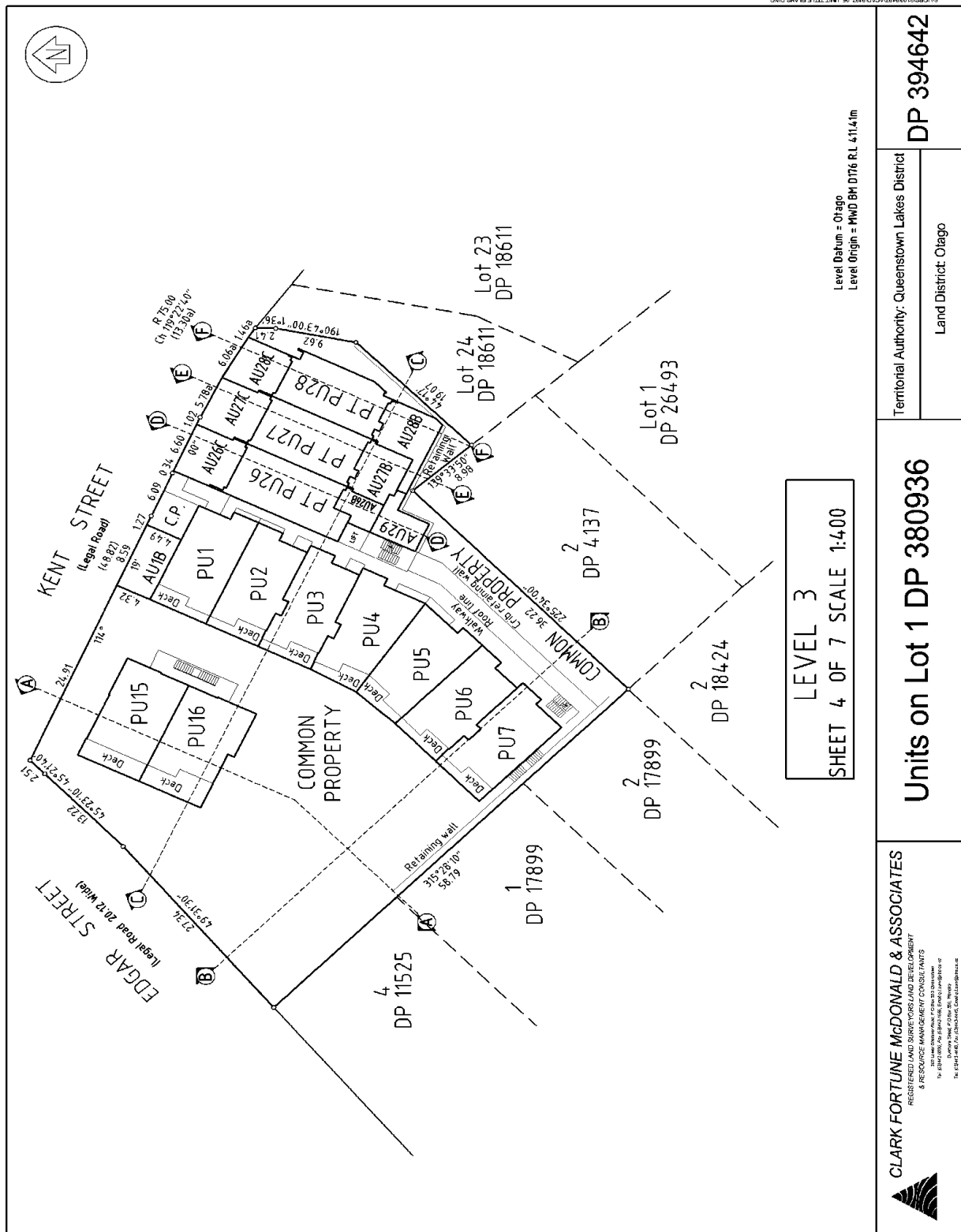
Territorial Authority: Queenstown Lakes District
Land District: Ottago

DP 394642

LEVEL 1
SHEET 2 OF 7 SCALE 1:400

Units on Lot 1 DP 380936

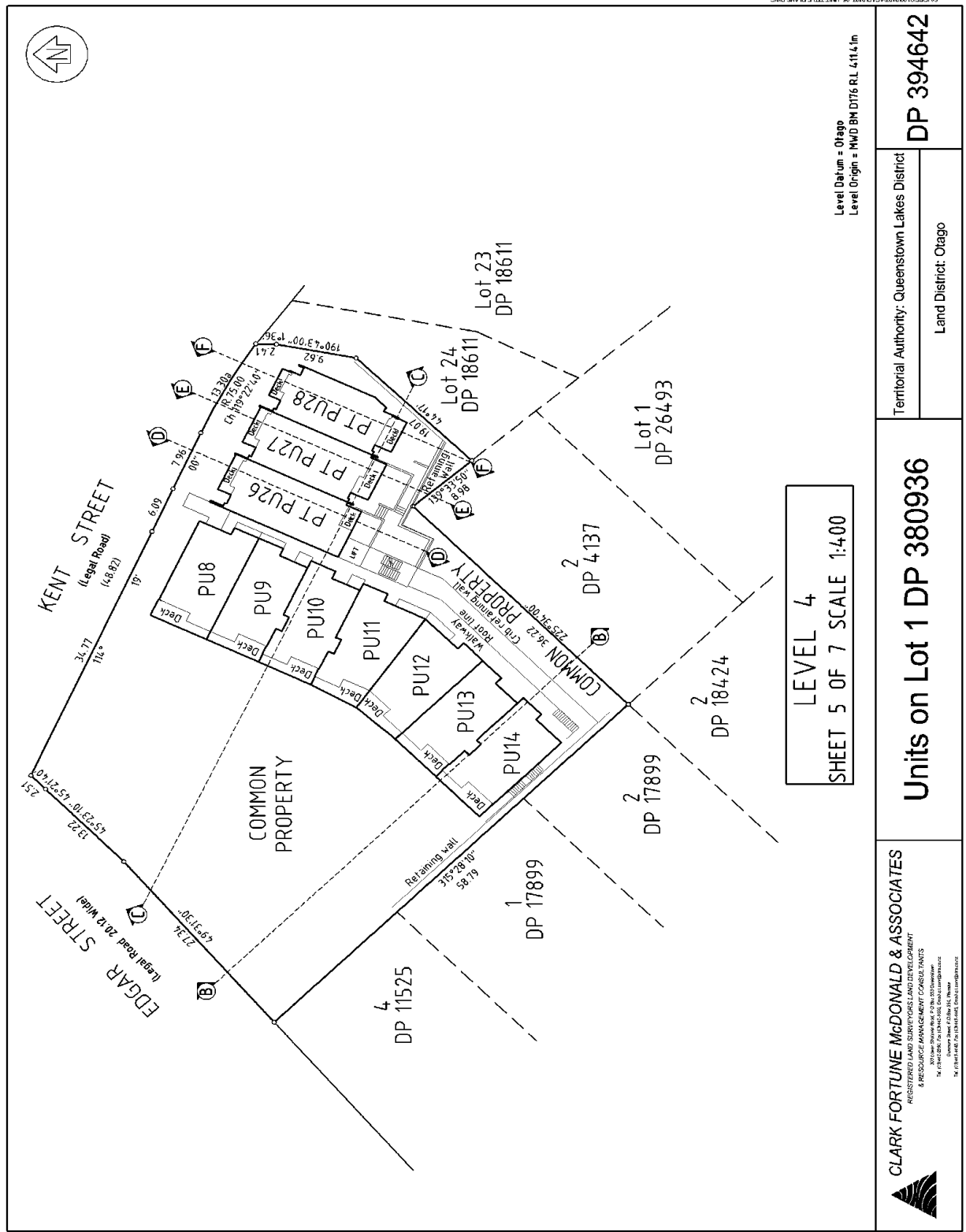
CLARK FORTUNE McDONALD & ASSOCIATES
REGISTERED LAND SURVEYORS/LAND DEVELOPMENT
& RESOURCE MANAGEMENT CONSULTANTS
170 (OTAGO) WALKER STREET, DUNEDIN, OTAGO 9010, NEW ZEALAND
Phone: 03 478 0100 Fax: 03 478 0101
www.clarkfortune.co.nz



LEVEL 3
SHEET 4 OF 7 SCALE 1:400

Level Datum = Otago
Level Origin = MWD BM DT16 R.L. 411.41m

<p>CLARK FORTUNE McDONALD & ASSOCIATES REGISTERED LAND TRANSACTIONS AND ESTATE AGENTS & RESOURCE MANAGEMENT CONSULTANTS 100 NEW ZEALAND ROAD, SUITE 201 DUNEDIN TEL: 03 478 4000, FAX: 03 478 4001, EMAIL: CLM@CLM.CO.NZ THE CLARK FORTUNE GROUP OF COMPANIES, CLARK FORTUNE GROUP</p>	<p>Units on Lot 1 DP 380936</p>	<p>Territorial Authority: Queenstown Lakes District Land District: Otago</p>	<p>DP 394642</p>
	<p>COMMON PROPERTY</p>		



LEVEL 4
SHEET 5 OF 7 SCALE 1:400

Level Datum = Otago
Level Origin = MWD BN D176 RL 4.114m

<p>CLARK FORTUNE McDONALD & ASSOCIATES REGISTERED ARCHITECTURAL FIRM REGISTERED ARCHITECTS (CORPORATE MEMBERS) 200 Newmarket Road, Christchurch 8013 Tel: 03 378 4444 Fax: 03 378 4444 Email: info@cfma.co.nz</p>	<p>Units on Lot 1 DP 380936</p>		<p>Territorial Authority: Queenstown Lakes District Land District: Otago</p>
	<p>DP 394642</p>		

